

WBS NO: 50930.3.5

CONTRACT: DA00606

STATE OF NORTH CAROLINA
DIVISION OF HIGHWAYS

CHOWAN

TYPE OF WORK: CONCRETE CURB RAMP IMPROVEMENTS

*SURFACE MOUNTED DETECTABLE WARNINGS
SHALL NOT BE PERMITTED ON THIS PROJECT

STATE	STATE PROJECT REFERENCE NUMBER	SHEET NO.
NC	BO-2401C	1
STATE PROJECT NUMBER		DESCRIPTION
50930.3.5		P.E., CONST.

Ramp ID	Proposed Ramp Type
021-0003	Standard Curb Ramp (Std. 848.06, pg 1-3)
021-0173	Type 1 Modified



Prepared in the Office of:
Johnson, Mirmiran and Thompson, Inc.
4700 Falls of Neuse Rd, Suite 100, Raleigh, NC, 27609

B. N. BRASWELL, PE
DIV. PROJ. DEVELOPMENT ENGINEER

M. S. WINSLOW
DIV. CONTRACT ENGINEER

BARRY HOBBS, PE
JMT PROJECT MANAGER

SAVANNA TAYLOR, EI
JMT DESIGN ENGINEER



WBS NO: 50930.3.5

CONTRACT: DA00606

STATE OF NORTH CAROLINA DIVISION OF HIGHWAYS

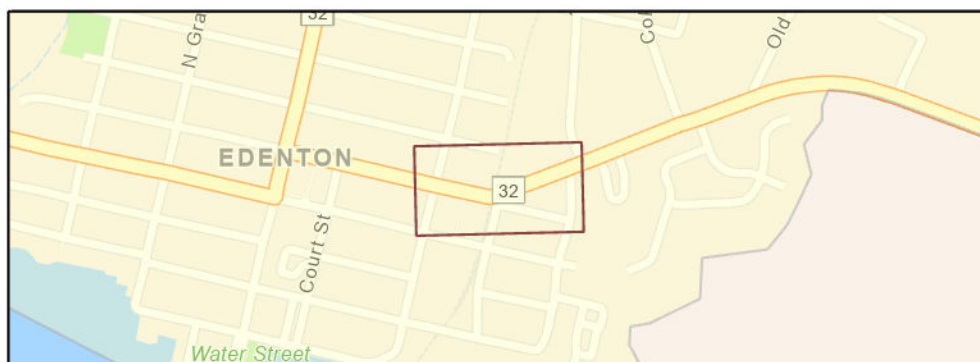
CHOWAN

TYPE OF WORK: CONCRETE CURB RAMP IMPROVEMENTS

*SURFACE MOUNTED DETECTABLE WARNINGS
SHALL NOT BE PERMITTED ON THIS PROJECT

STATE	STATE PROJECT REFERENCE NUMBER	SHEET NO.
NC	BO-2401C	2
STATE PROJECT NUMBER		DESCRIPTION
50930.3.5		P.E., CONST.

Ramp ID	Proposed Ramp Type
021-0141	Retrofit Existing Ramp
021-1003	Retrofit Existing Ramp



Prepared in the Office of:
Johnson, Mirmiran and Thompson, Inc.
 4700 Falls of Neuse Rd, Suite 100, Raleigh, NC, 27609

B. N. BRASWELL, PE
 DIV. PROJ. DEVELOPMENT ENGINEER

M. S. WINSLOW
 DIV. CONTRACT ENGINEER

BARRY HOBBS, PE
 JMT PROJECT MANAGER

SAVANNA TAYLOR, EI
 JMT DESIGN ENGINEER



WBS NO: 50930.3.5

CONTRACT: DA00606

*SURFACE MOUNTED DETECTABLE WARNINGS SHALL NOT BE PERMITTED ON THIS PROJECT

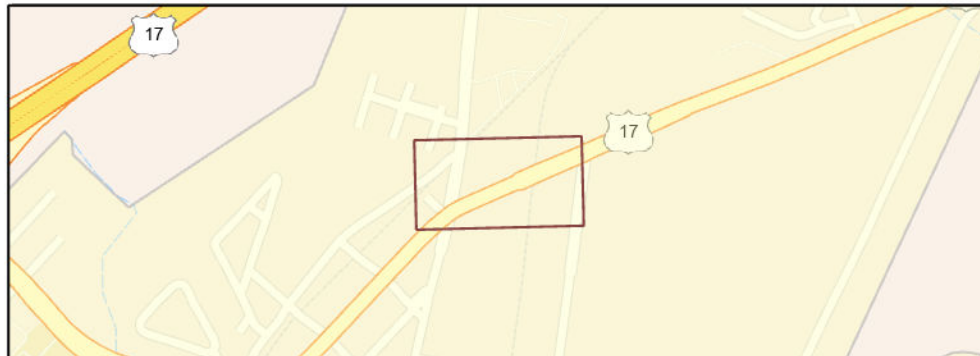
STATE OF NORTH CAROLINA
DIVISION OF HIGHWAYS

CHOWAN

TYPE OF WORK: CONCRETE CURB RAMP IMPROVEMENTS

STATE	STATE PROJECT REFERENCE NUMBER	SHEET NO.
NC	BO-2401C	3
STATE PROJECT NUMBER		DESCRIPTION
50930.3.5		P.E., CONST.

Ramp ID	Proposed Ramp Type
021-0073	Type 1 Modified



Prepared in the Office of:
Johnson, Mirmiran and Thompson, Inc.
 4700 Falls of Neuse Rd, Suite 100, Raleigh, NC, 27609

B. N. BRASWELL, PE
 DIV. PROJ. DEVELOPMENT ENGINEER

M. S. WINSLOW
 DIV. CONTRACT ENGINEER

BARRY HOBBS, PE
 JMT PROJECT MANAGER

SAVANNA TAYLOR, EI
 JMT DESIGN ENGINEER



WBS NO: 50930.3.5

CONTRACT: DA00606

STATE OF NORTH CAROLINA
DIVISION OF HIGHWAYS

HYDE

TYPE OF WORK: CONCRETE CURB RAMP IMPROVEMENTS

*SURFACE MOUNTED DETECTABLE WARNINGS
SHALL NOT BE PERMITTED ON THIS PROJECT

STATE	STATE PROJECT REFERENCE NUMBER	SHEET NO.
NC	BO-2401C	4
STATE PROJECT NUMBER		DESCRIPTION
50930.3.5		P.E., CONST.

Ramp ID	Proposed Ramp Type
048-0025	Retrofit Existing Ramp



Prepared in the Office of:
Johnson, Mirmiran and Thompson, Inc.
4700 Falls of Neuse Rd, Suite 100, Raleigh, NC, 27609

B. N. BRASWELL, PE
DIV. PROJ. DEVELOPMENT ENGINEER

M. S. WINSLOW
DIV. CONTRACT ENGINEER

BARRY HOBBS, PE
JMT PROJECT MANAGER

SAVANNA TAYLOR, EI
JMT DESIGN ENGINEER



WBS NO: 50930.3.5

CONTRACT: DA00606

STATE OF NORTH CAROLINA
DIVISION OF HIGHWAYS

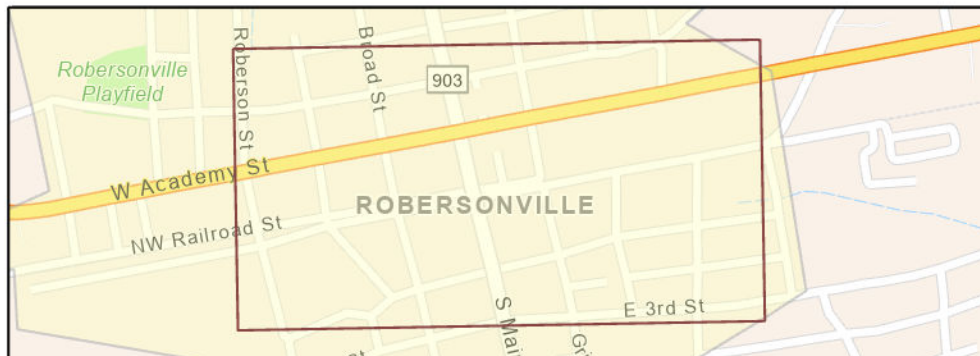
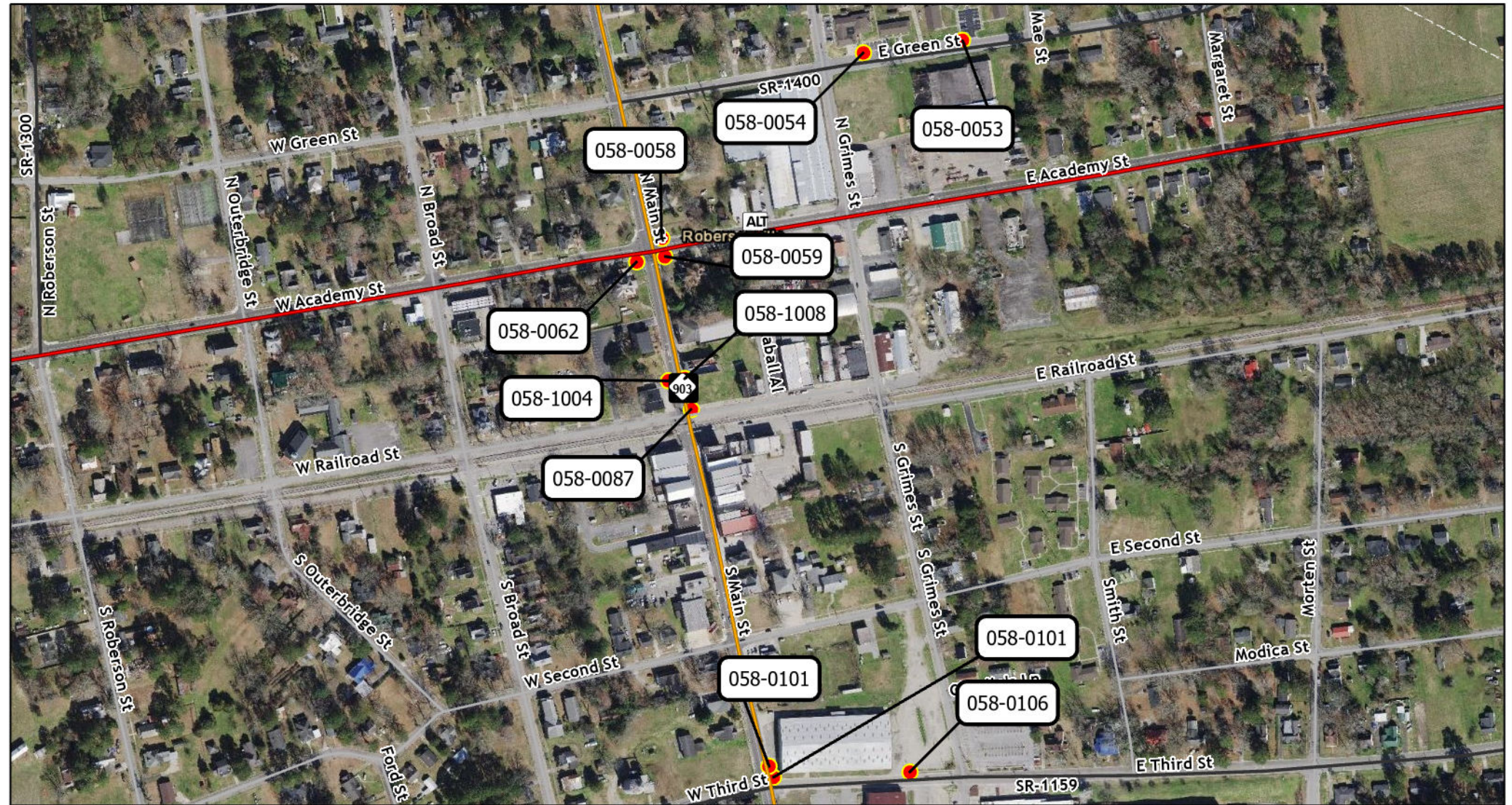
MARTIN

TYPE OF WORK: CONCRETE CURB RAMP IMPROVEMENTS

*SURFACE MOUNTED DETECTABLE WARNINGS SHALL NOT BE PERMITTED ON THIS PROJECT

STATE	STATE PROJECT REFERENCE NUMBER	SHEET NO.
NC	BO-2401C	5
STATE PROJECT NUMBER		DESCRIPTION
50930.3.5		P.E., CONST.

Ramp ID	Proposed Ramp Type
058-0053	Type 1 Modified
058-0054	Type 1A
058-0058	Type 1B
058-0059	Type 2B
058-0062	Type 2B
058-0087	Remove Ramp
058-0101	Type 1
058-0101	Type 1
058-0106	Type 1 Modified
058-1004	Type 2
058-1008	Type 2



Prepared in the Office of:
Johnson, Mirmiran and Thompson, Inc.
4700 Falls of Neuse Rd, Suite 100, Raleigh, NC, 27609

B. N. BRASWELL, PE
DIV. PROJ. DEVELOPMENT ENGINEER

M. S. WINSLOW
DIV. CONTRACT ENGINEER

BARRY HOBBS, PE
JMT PROJECT MANAGER

SAVANNA TAYLOR, EI
JMT DESIGN ENGINEER



WBS NO: 50930.3.5

CONTRACT: DA00606

STATE OF NORTH CAROLINA
DIVISION OF HIGHWAYS

MARTIN

TYPE OF WORK: CONCRETE CURB RAMP IMPROVEMENTS

*SURFACE MOUNTED DETECTABLE WARNINGS
SHALL NOT BE PERMITTED ON THIS PROJECT

STATE	STATE PROJECT REFERENCE NUMBER	SHEET NO.
NC	BO-2401C	6
STATE PROJECT NUMBER		DESCRIPTION
50930.3.5		P.E., CONST.

Ramp ID	Proposed Ramp Type
058-0003	Type 1
058-1005	Type 1
058-1006	Type 1
058-1007	Type 1



Prepared in the Office of:
Johnson, Mirmiran and Thompson, Inc.
4700 Falls of Neuse Rd, Suite 100, Raleigh, NC, 27609

B. N. BRASWELL, PE
DIV. PROJ. DEVELOPMENT ENGINEER

M. S. WINSLOW
DIV. CONTRACT ENGINEER

BARRY HOBBS, PE
JMT PROJECT MANAGER

SAVANNA TAYLOR, EI
JMT DESIGN ENGINEER



WBS NO: 50930.3.5

CONTRACT: DA00606

STATE OF NORTH CAROLINA
DIVISION OF HIGHWAYS

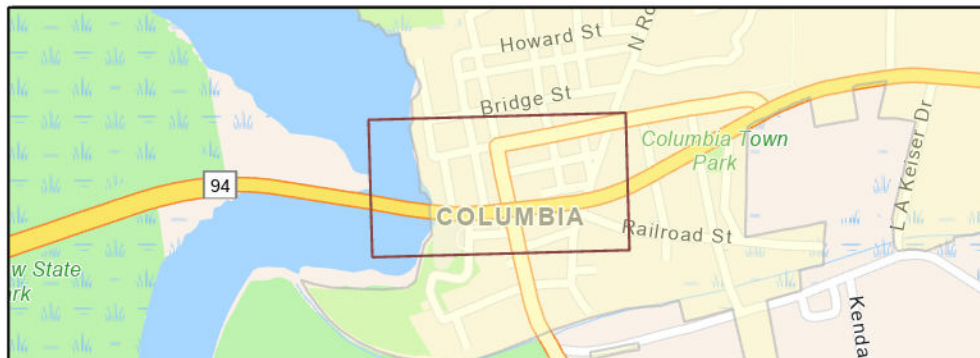
TYRRELL

TYPE OF WORK: CONCRETE CURB RAMP IMPROVEMENTS

STATE	STATE PROJECT REFERENCE NUMBER	SHEET NO.
NC	BO-2401C	7
STATE PROJECT NUMBER		DESCRIPTION
50930.3.5		P.E., CONST.

*SURFACE MOUNTED DETECTABLE WARNINGS SHALL NOT BE PERMITTED ON THIS PROJECT

Ramp ID	Proposed Ramp Type
089-0006	Retrofit Existing Ramp
089-0073	Remove Ramp
089-0080	Retrofit Existing Ramp
089-0119	Type 1
089-0137	Type 1



Prepared in the Office of:
Johnson, Mirmiran and Thompson, Inc.
4700 Falls of Neuse Rd, Suite 100, Raleigh, NC, 27609

B. N. BRASWELL, PE
DIV. PROJ. DEVELOPMENT ENGINEER

M. S. WINSLOW
DIV. CONTRACT ENGINEER

BARRY HOBBS, PE
JMT PROJECT MANAGER

SAVANNA TAYLOR, EI
JMT DESIGN ENGINEER



WBS NO: 50930.3.5

CONTRACT: DA00606

STATE OF NORTH CAROLINA
DIVISION OF HIGHWAYS

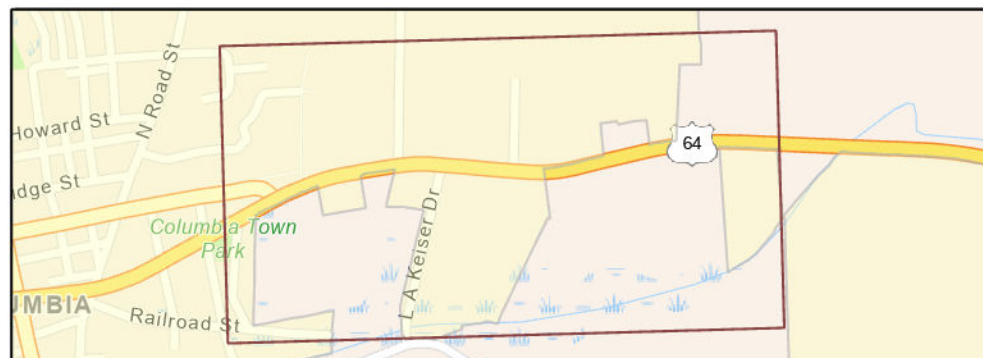
TYRRELL

TYPE OF WORK: CONCRETE CURB RAMP IMPROVEMENTS

STATE	STATE PROJECT REFERENCE NUMBER	SHEET NO.
NC	BO-2401C	8
STATE PROJECT NUMBER		DESCRIPTION
50930.3.5		P.E., CONST.

*SURFACE MOUNTED DETECTABLE WARNINGS SHALL NOT BE PERMITTED ON THIS PROJECT

Ramp ID	Proposed Ramp Type
089-0038	Remove Ramp
089-0054	Type 2
089-0148	Type 1 Modified
089-0148	Type 1 Modified
089-0148	Type 1 Modified
089-148A	Type 1 Modified



Prepared in the Office of:
Johnson, Mirmiran and Thompson, Inc.
4700 Falls of Neuse Rd, Suite 100, Raleigh, NC, 27609

B. N. BRASWELL, PE
DIV. PROJ. DEVELOPMENT ENGINEER

M. S. WINSLOW
DIV. CONTRACT ENGINEER

BARRY HOBBS, PE
JMT PROJECT MANAGER

SAVANNA TAYLOR, EI
JMT DESIGN ENGINEER



WBS NO: 50930.3.5

CONTRACT: DA00606

*SURFACE MOUNTED DETECTABLE WARNINGS SHALL NOT BE PERMITTED ON THIS PROJECT

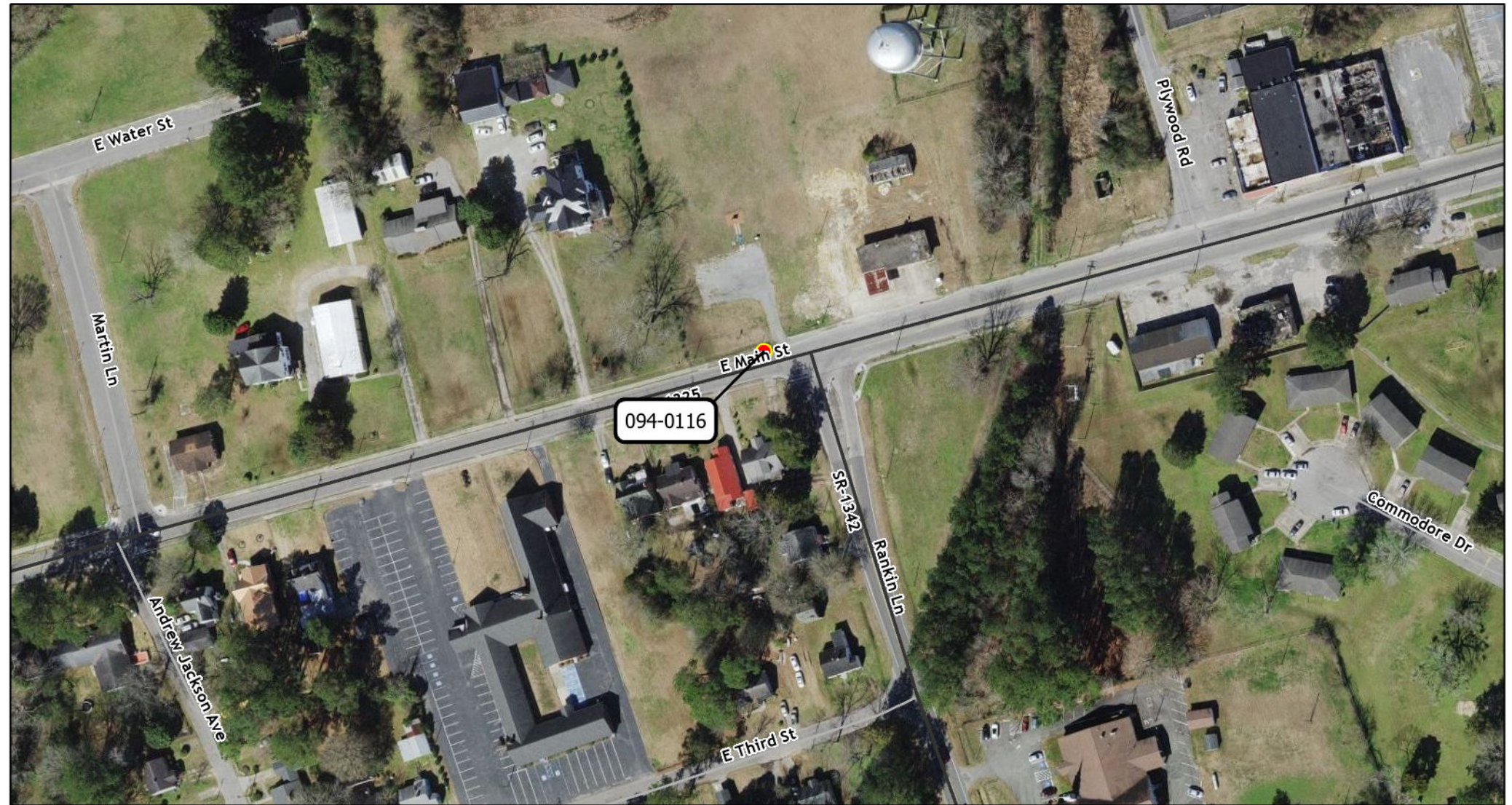
STATE OF NORTH CAROLINA
DIVISION OF HIGHWAYS

WASHINGTON

TYPE OF WORK: CONCRETE CURB RAMP IMPROVEMENTS

STATE	STATE PROJECT REFERENCE NUMBER	SHEET NO.
NC	BO-2401C	9
STATE PROJECT NUMBER		DESCRIPTION
50930.3.5		P.E., CONST.

Ramp ID	Proposed Ramp Type
094-0116	Type 1A



Prepared in the Office of:
Johnson, Mirmiran and Thompson, Inc.
4700 Falls of Neuse Rd, Suite 100, Raleigh, NC, 27609

B. N. BRASWELL, PE
DIV. PROJ. DEVELOPMENT ENGINEER

M. S. WINSLOW
DIV. CONTRACT ENGINEER

BARRY HOBBS, PE
JMT PROJECT MANAGER

SAVANNA TAYLOR, EI
JMT DESIGN ENGINEER



WBS NO: 50930.3.5

CONTRACT: DA00606

STATE OF NORTH CAROLINA
DIVISION OF HIGHWAYS

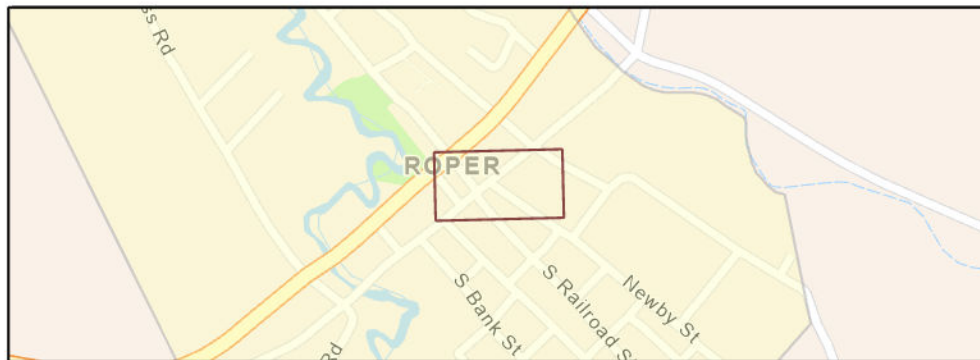
WASHINGTON

TYPE OF WORK: CONCRETE CURB RAMP IMPROVEMENTS

*SURFACE MOUNTED DETECTABLE WARNINGS
SHALL NOT BE PERMITTED ON THIS PROJECT

STATE	STATE PROJECT REFERENCE NUMBER	SHEET NO.
NC	BO-2401C	10
STATE PROJECT NUMBER		DESCRIPTION
50930.3.5		P.E., CONST.

Ramp ID	Proposed Ramp Type
094-0140	Type 1



Prepared in the Office of:
Johnson, Mirmiran and Thompson, Inc.
4700 Falls of Neuse Rd, Suite 100, Raleigh, NC, 27609

B. N. BRASWELL, PE
DIV. PROJ. DEVELOPMENT ENGINEER

M. S. WINSLOW
DIV. CONTRACT ENGINEER

BARRY HOBBS, PE
JMT PROJECT MANAGER

SAVANNA TAYLOR, EI
JMT DESIGN ENGINEER



Ramp ID	Sheet No	County	Municipality	Route	Street Name	Crossing Feature	Proposed Ramp Type	Total Length of Warning Pads	4" Concrete Sidewalk (SY)	2'-6" Concrete Curb & Gutter Quantity (LF)	Remove & Replace Conc. Curb Ramps (EA)	Drainage Pipe Extensions	Relocate Existing Sign (EA)	24" Thermoplastic Pavement Markings Lines (LF)
021-0003	1	Chowan	Edenton	US-17 Bus.	S Broad St	State Maintained Route	Standard Curb Ramp (Std. 848.06, pg 1-3))	48"	3	13	1			
021-0073	3	Chowan	Edenton	US-17 Bus.	N Broad St	Commercial Driveway	Type 1 Modified	48"			1			
021-0141	2	Chowan	Edenton	NC-32	E Church St	Commercial Driveway	Retrofit Existing Ramp	48"						
021-0173	1	Chowan	Edenton	US-17 Bus.	W Queen St	Commercial Driveway	Type 1 Modified	48"		3	1			
021-1003	2	Chowan	Edenton	NC-32	E. Church street	Other	Retrofit Existing Ramp	48"						
048-0025	4	Hyde	Engelhard	US-264		State Maintained Route	Retrofit Existing Ramp	168"						
058-0003	6	Martin	Jamesville	NC-171	Saint Andrews St	Commercial Driveway	Type 1	48"	5		1			
058-0053	5	Martin	Robersonville	SR-1400	E Green St	State Maintained Route	Type 1 Modified	48"			1			
058-0054	5	Martin	Robersonville	SR-1400	E Green St	Commercial Driveway	Type 1A	60"						
058-0058	5	Martin	Robersonville	NC-903	N Main St	State Maintained Route	Type 1B	48"						
058-0059	5	Martin	Robersonville	US-64 Alt.	N Main St	State Maintained Route	Type 2B	48"						
058-0062	5	Martin	Robersonville	US-64 Alt.	N Main St	State Maintained Route	Type 2B	48"						
058-0087	5	Martin	Robersonville	NC-903	S Main St	State Maintained Route	Remove Ramp	48"	2					
058-0101	5	Martin	Robersonville	NC-903	S Main St	Non-State Maintained Route	Type 1	48"		15	1			
058-0101	5	Martin	Robersonville	NC-903	S Main St	Commercial Driveway	Type 1	48"			1			
058-0106	5	Martin	Robersonville	SR-1159	E Third St	Commercial Driveway	Type 1 Modified	48"	1					
058-1004	5	Martin	Robersonville	NC-903	N Main St	State Maintained Route	Type 2	48"			1			
058-1005	6	Martin	Jamesville	NC-171	Saint Andrews St	Commercial Driveway	Type 1	48"	5		1			
058-1006	6	Martin	Jamesville	NC-171	Saint Andrews St	Commercial Driveway	Type 1	48"	5		1			
058-1007	6	Martin	Jamesville	NC-171	Saint Andrews St	Commercial Driveway	Type 1	48"	8		1			
058-1008	5	Martin	Robersonville	NC-903		State Maintained Route	Type 2	48"						
089-0006	7	Tyrrell	Columbia	NC-94	S Broad St	State Maintained Route	Retrofit Existing Ramp	48"						
089-0038	8	Tyrrell	Columbia	US-64		Commercial Driveway	Remove Ramp	48"						
089-0054	8	Tyrrell	Columbia	US-64	Scuppernong Dr	State Maintained Route	Type 2	48"			1			
089-0073	7	Tyrrell	Columbia	US-64	Scuppernong Dr	State Maintained Route	Remove Ramp	48"	10	20				
089-0080	7	Tyrrell	Columbia	US-64 Bus.		Other	Retrofit Existing Ramp	72"						
089-0119	7	Tyrrell	Columbia	US-64 Bus.	Main St	Non-State Maintained Route	Type 1	48"	4.5		1			
089-0137	7	Tyrrell	Columbia	US-64 Bus.	S Broad St	Commercial Driveway	Type 1	48"	11	25				
089-0148	8	Tyrrell	Columbia	US-64		Commercial Driveway	Type 1 Modified	48"			1			
089-0148	8	Tyrrell	Columbia	US-64		Commercial Driveway	Type 1 Modified	48"			1			
089-0148	8	Tyrrell	Columbia	US-64		Commercial Driveway	Type 1 Modified	48"			1			
089-148A	8	Tyrrell	Columbia	US-64		Commercial Driveway	Type 1 Modified	48"			1			
094-0116	9	Washington	Plymouth	SR-1325	Rankin Ln	State Maintained Route	Type 1A	48"						
094-0140	10	Washington	Roper	SR-1122	E Buncombe St	Non-State Maintained Route	Type 1	48"	2		1			
Total									56.5	76	18	0	0	0

Ramp Type Summary	
Standard Curb Ramp	1
Type 1	9
Type 1 Modified	8
Type 1A	2
Type 1B	1
Type 1D	0
Type 2	3
Type 2A	0
Type 2B	2
Type 2A Modified	0
Type 3	0
Type 3 Modified in Radius	0
Type 4C	0
Type 7	0
Add 4 ft. min. clear space	0

Summary of Quantities	
Concrete Curb Ramps (EA)	8
Remove Curb Ramp (EA)	3
Retrofit Existing Concrete Curb Ramps (EA)	5
Remove & Replace Concrete Curb Ramps (EA)	18
4" Concrete Sidewalk (SY)	56.5
2'-6" Conc. Curb & Gutter (LF)	76
Drainage Pipe Extensions (EA)	0
Relocate Existing Sign (EA)	0
24" Thermoplastic Pavement Markings Lines (LF)	0